

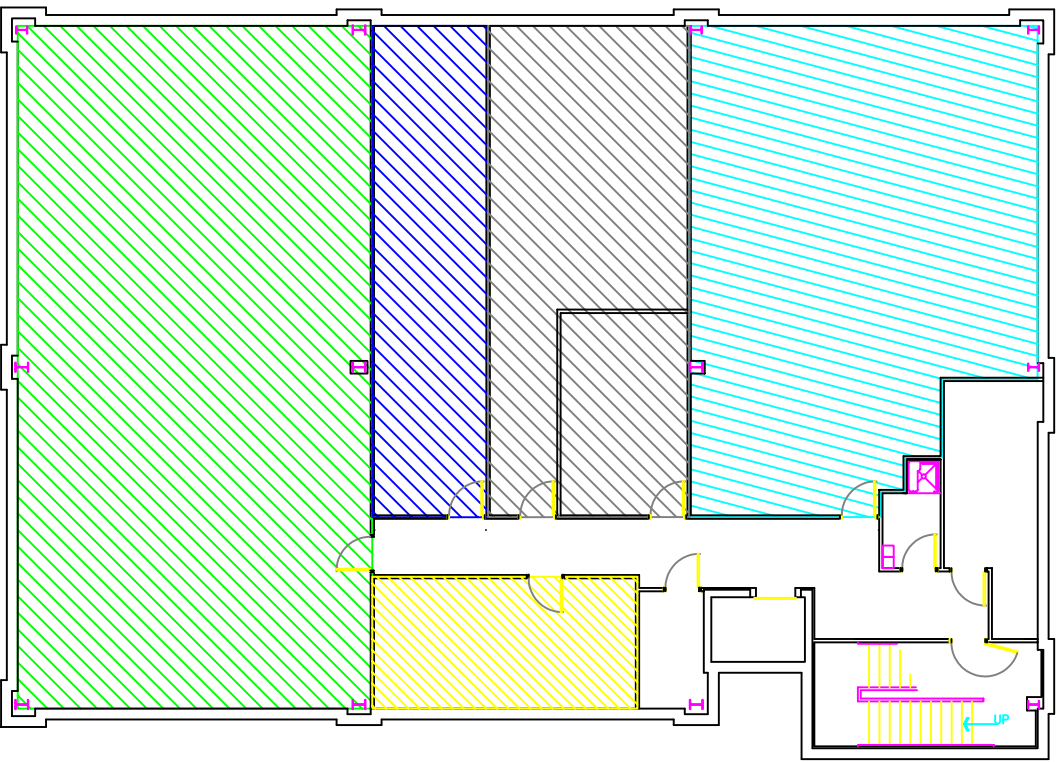
SUITE 10  
 2,116 RSF (1/31/05)  
 STORAGE - 1,915 USF  
 PTB, INC.

SUITE 20  
 498 RSF (7/15/05)  
 STORAGE - 451 USF  
 BUCKEYE CORRUGATED

SUITE 30  
 865 RSF (8/1/07)  
 STORAGE - 783 USF  
 SS&G FINANCIAL

SUITE 40  
 1,354 RSF (8/1/07)  
 STORAGE - 1,226 USF  
 VACANT

SUITE 50  
 306 RSF (10/1/04)  
 STORAGE - 277 USF  
 BUILDING



BASEMENT FLOOR PLAN

1/8" = 1'



revisions

SPRINGSIDE CORPORATE EXCHANGE  
 275 SPRINGSIDE DRIVE  
 SUITE 100  
 BATH, OHIO

**C&M INC.**  
 BUILDER / DEVELOPER  
 1525 CORPORATE WOODS PKY.  
 P.O. BOX 3015  
 AKRON, OHIO 44309  
 330-986-3253  
 FAX: 330-889-3304

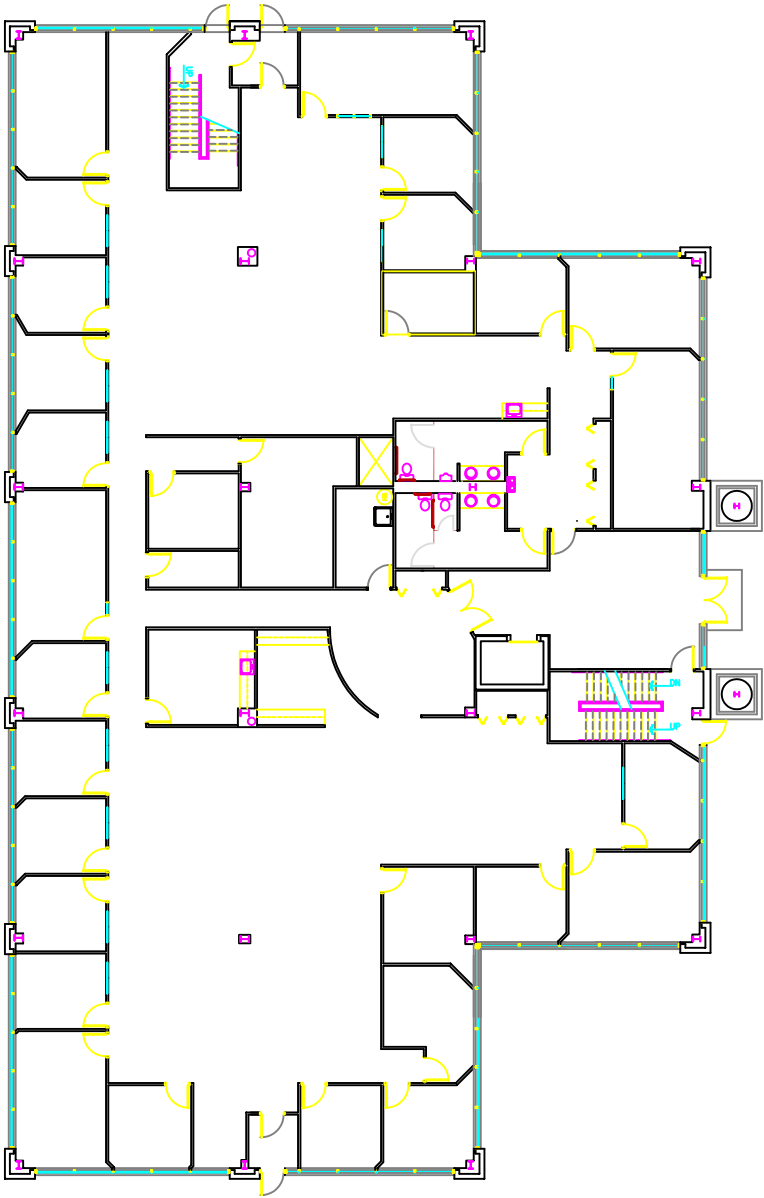
Contract no.  
 05-2032  
 date  
 5/9/07

BASEMENT FLOOR PLAN

TA0

SUITE 100  
 11,547 RSF (1/1/04)  
 OFFICE - 10,826 USF  
 SS&G FINANCIAL SERVICES

FLOOR PLAN  
 1/8" = 1'



revisions

SS&G  
 SPRINGSIDE CORPORATE EXCHANGE  
 275 SPRINGSIDE DRIVE  
 BATH, OHIO

**C&M INC.**  
 BUILDER / DEVELOPER  
 185 CORPORATE WOODS PARKWAY  
 P.O. BOX 30715  
 AKRON, OHIO 44309  
 TEL: 330-998-3253  
 FAX: 330-998-3304

contract no.  
 02-023A  
 date  
 4/23/04

FIRST FLOOR PLAN

TA1



revisions

SS&G  
SPRINGSIDE CORPORATE EXCHANGE  
275 SPRINGSIDE DRIVE  
SUITE 250  
BATH, OHIO

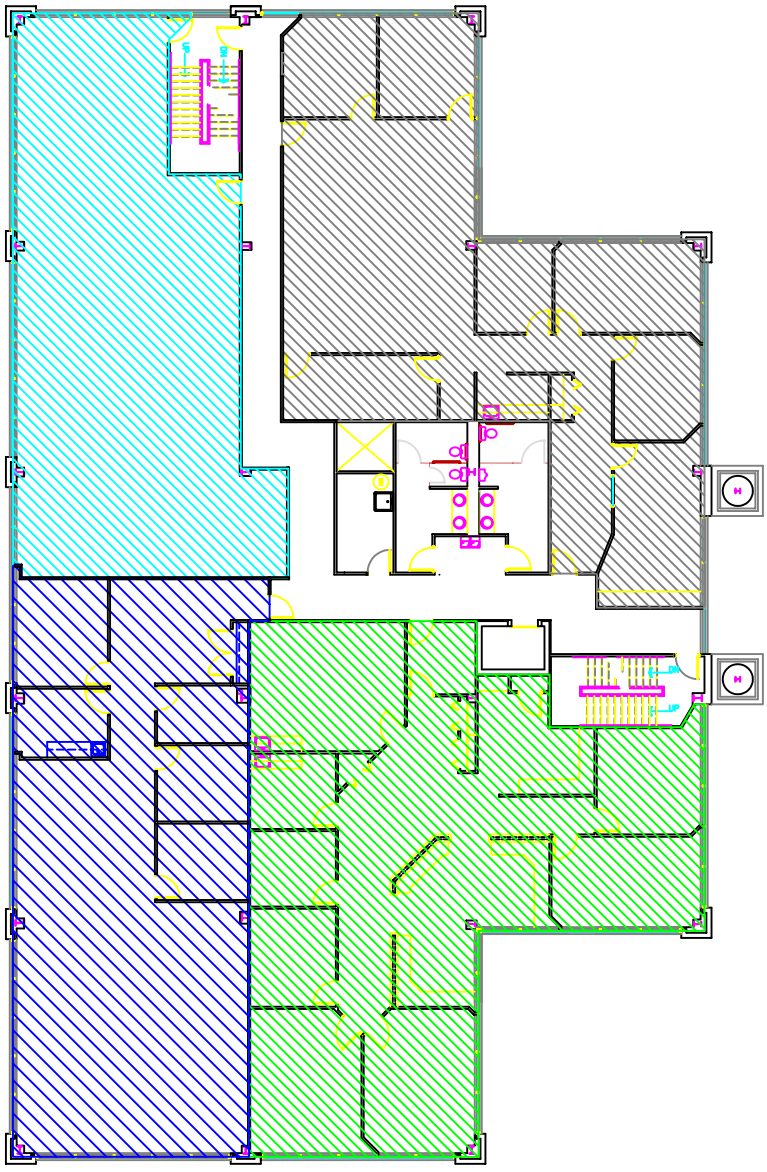
**CM INC.**  
BUILDER / DEVELOPER  
1525 CORPORATE WOODS PKY.  
P.O. BOX 30515  
AKRON, OHIO 44309  
230-986-3253  
FAX: 330-889-3304

contract no.  
02-03 F  
date  
6/11/07

FLOOR PLAN

TA1

2ND FLOOR PLAN  
1/8" = 1'



SUITE 200  
3,538 RSF (7/15/05)  
OFFICE - 3,048 USF  
BUCKEYE CORRUGATED

SUITE 220  
2,816 RSF (7/1/05)  
OFFICE - 2,426 USF  
LIBERTY MUTUAL

SUITE 250  
3,033 RSF (9/1/07)  
OFFICE - 2,613 USF  
SS&G FINANCIAL SERVICES

SUITE 275  
2,509 RSF (7/1/07)  
OFFICE - 2,161 USF  
VACANT



revisions

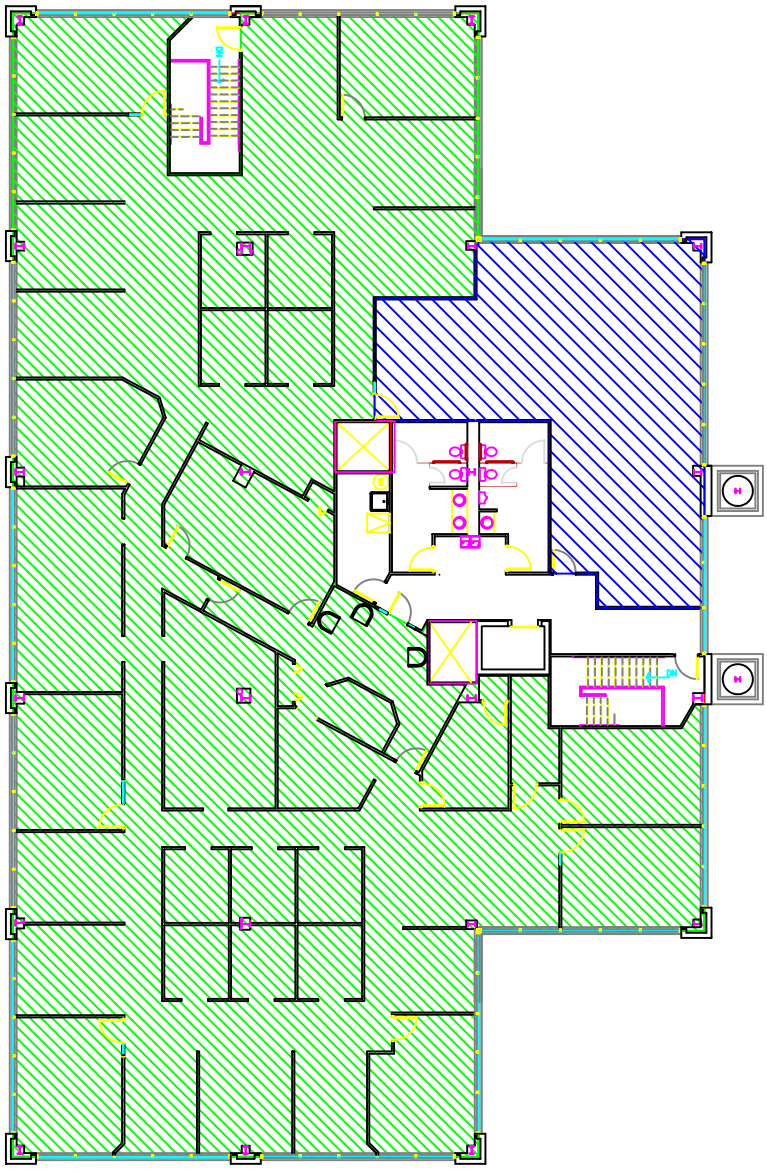
Peters, Tschantz, & Bandwen Inc.  
 SPRINGSIDE CORPORATE EXCHANGE  
 275 SPRINGSIDE DRIVE  
 BATH, OHIO

**C&M INC.**  
 BUILDER / DEVELOPER  
 180 CORPORATE WOODS PARKWAY  
 P.O. BOX 30715  
 AKRON, OHIO 44309  
 330-986-3253  
 FAX: 330-889-3304

contract no.  
 02-03  
 date  
 9/9/03

THIRD FLOOR PLAN

TA1



THIRD FLOOR PLAN  
 1/8" = 1'

- SUITE 300  
 OFFICE - 9,301 USF  
 PTB, INC.
- SUITE 350  
 OFFICE - 1,433 USF  
 PTB EXPANSION/VACANT