

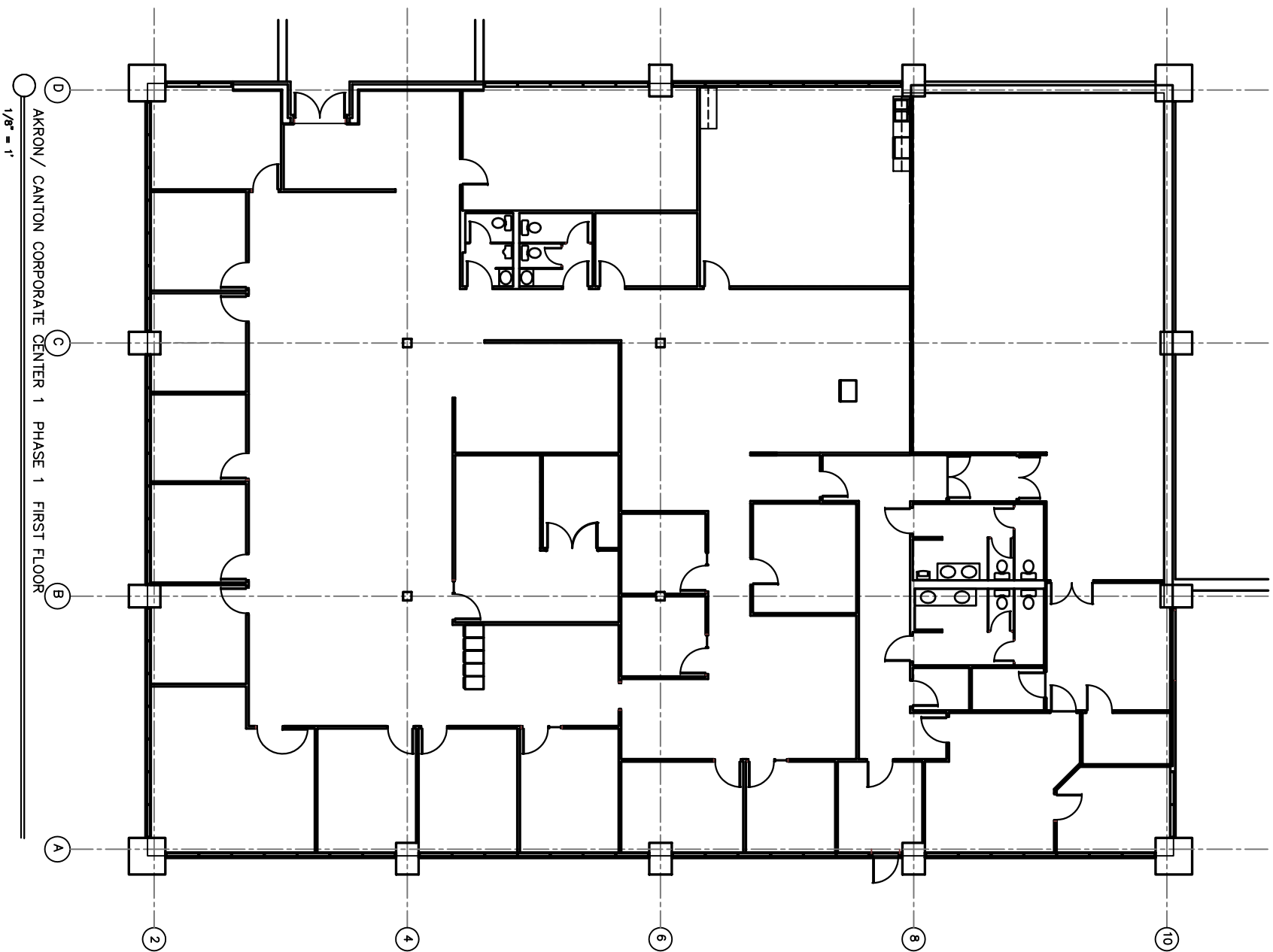
AKRON /
CANTON
CORP.
CENTER I

C/M INC.
BUILDER / DEVELOPER
1525 CORPORATE WOODS PKWY.
P.O. BOX 3515
AKRON, OHIO 44309
VOICE: 330-896-3253
FAX: 330-896-3304

contract no.

date
5/12/05
drawn by

TA1



AKRON / CANTON CORPORATE CENTER 1 PHASE 1 FIRST FLOOR
1/8" = 1'

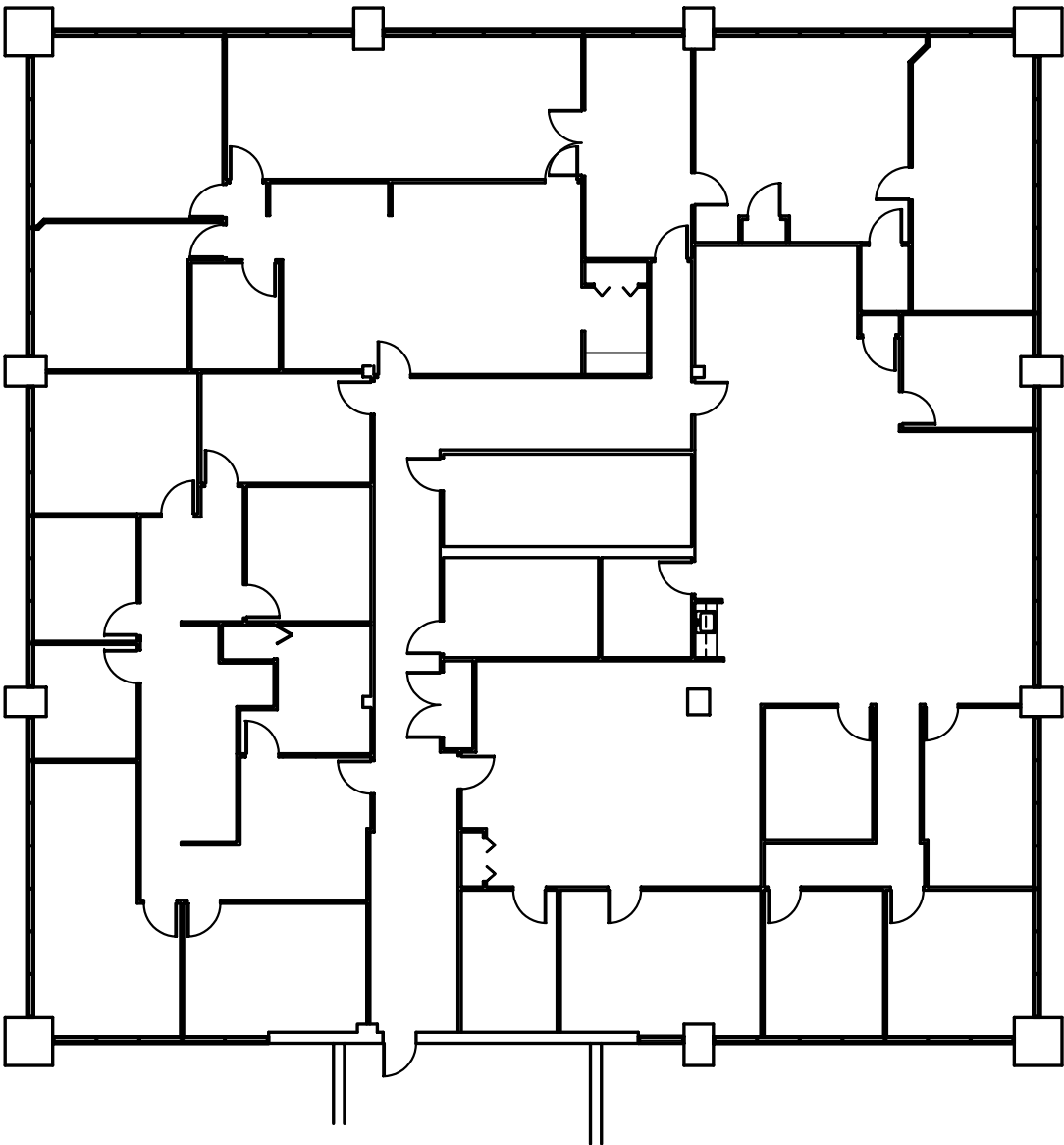
AKRON /
CANTON
CORPORATE
CENTER 1

C/M INC.
BUILDER / DEVELOPER
1525 CORPORATE WOODS PKY.
P.O. BOX 3515
AKRON, OHIO 44309
VOICE: 330-896-3253
FAX: 330-896-3304

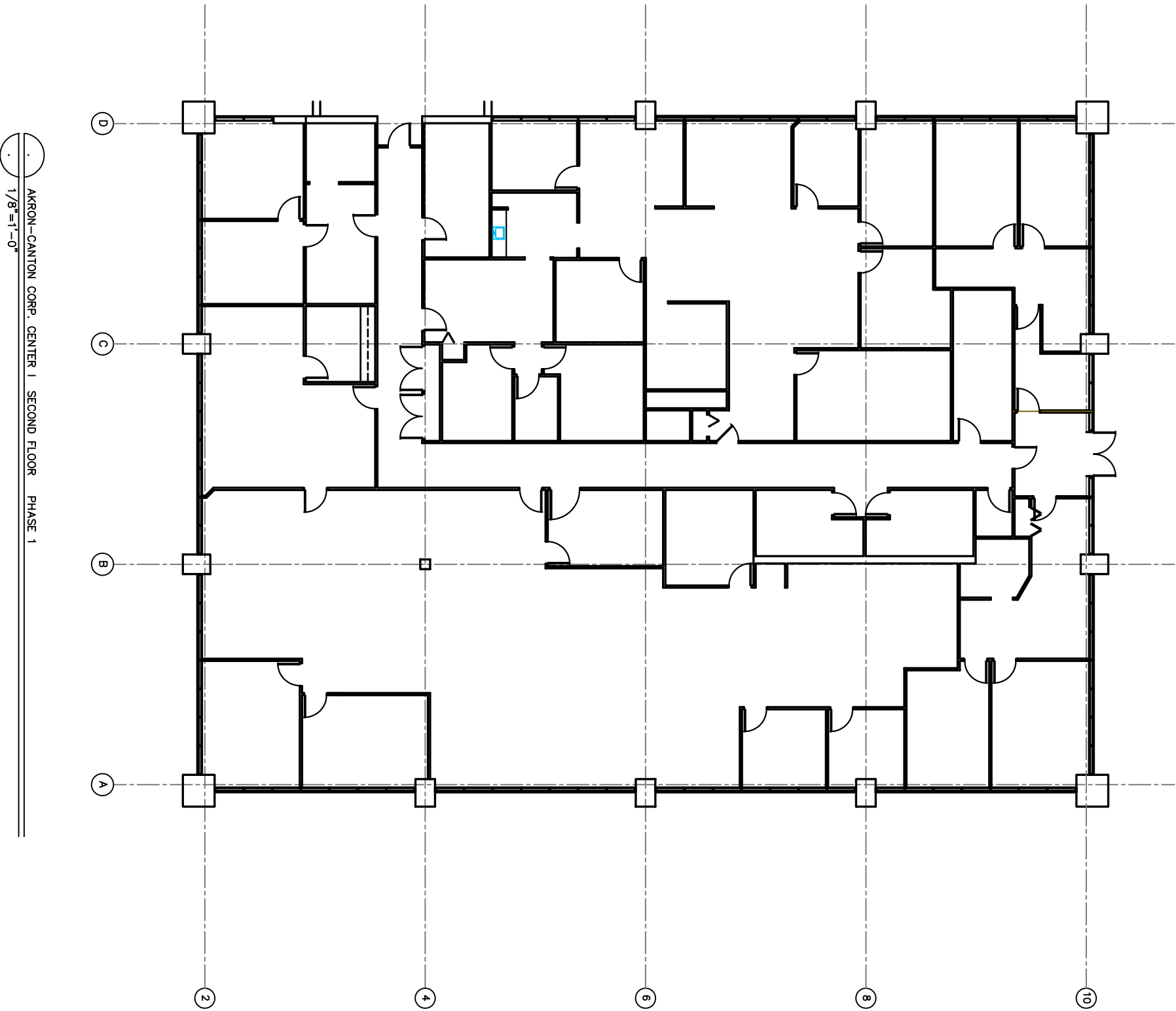
contract no.
c-
date
-/-
drawn by

FIRST FLOOR PHASE 2

TA3



AKRON / CANTON CORPORATE CENTER 1 PHASE 2 FIRST FLOOR
1/8" = 1'



AKRON-CANTON CORP. CENTER | SECOND FLOOR PHASE 1
 1/8"=1'-0"

FLOOR PLAN

TA1

engineer no.
 03-846
 12/90/03
 drawn by

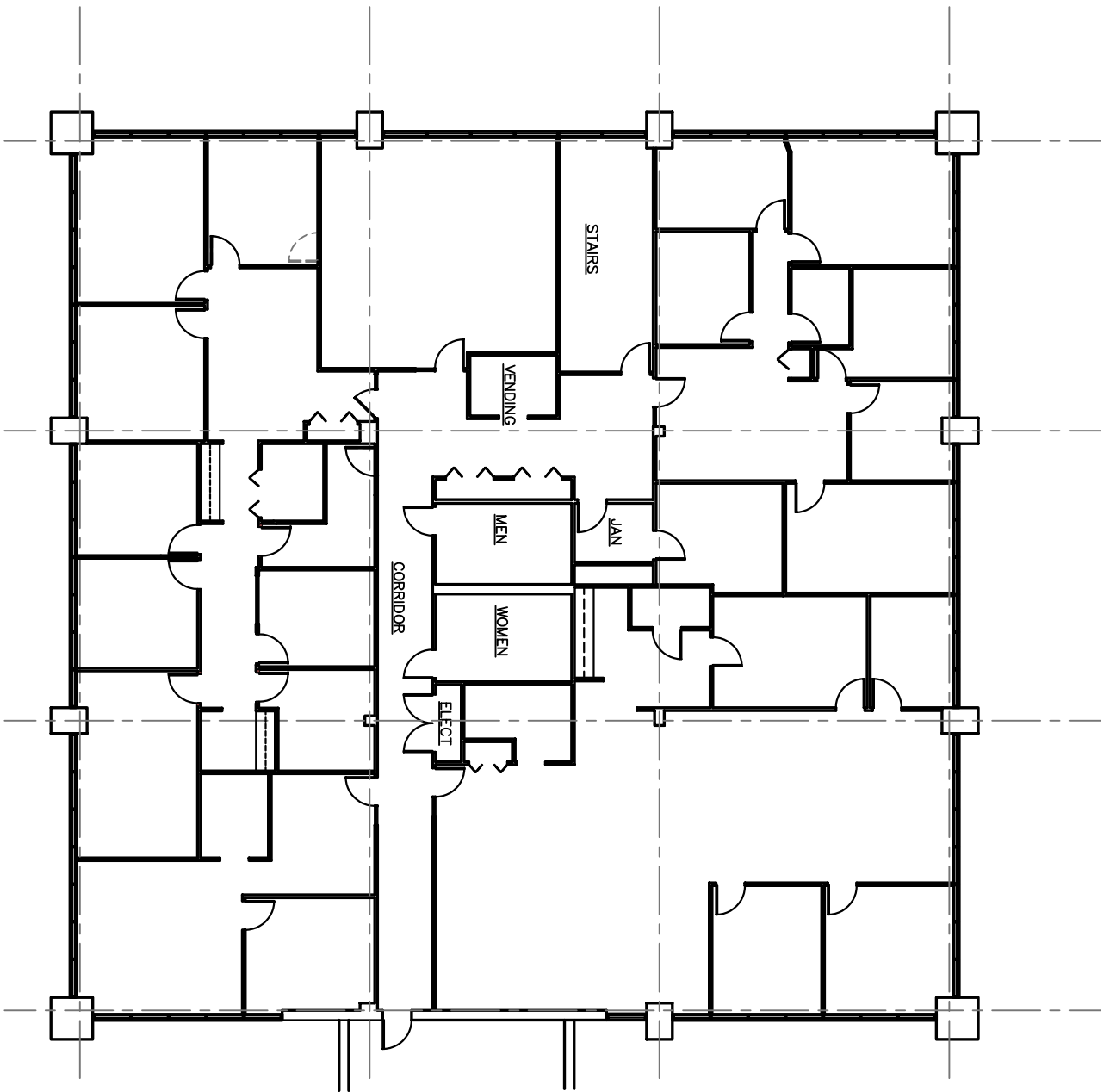
CSM INC.
 BUILDER / DEVELOPER
 1525 CORPORATE WOODS PKWY.
 P.O. BOX 3515
 AKRON, OHIO 44309
 VOICE: 330-896-3253
 FAX: 330-896-3304

AKRON/ CANTON
CORPORATE CENTER 1

3500 MASSILLON RD.
 CITY OF GREEN, OHIO

PROJECT OWNER:
 A&M ASSOCIATES
 AN OHIO LIMITED PARTNERSHIP

revisions



① AKRON / CANTON CORPORATE CENTER 1 PHASE 2 SECOND FLOOR
 1/8" = 1'

revisions

AKRON /
 CANTON
 CORP.
 CENTER 1

CSM INC.
 BUILDER / DEVELOPER
 1525 CORPORATE WOODS PKY,
 P.O. BOX 3515
 AKRON, OHIO 44309
 VOICE: 330-896-3253
 FAX: 330-896-3304

contract no.
 C-
 date
 11/28/06
 drawn by

SECOND FLOOR PHASE 2

TA4